



Cod	Funcționare	Denumire		Pompa Dozatoare Hydra		Dimensiuni	Greutate	Pret lista
		Debit	Presiune	Impulsuri	Volum dozaj			
		[l/h]	[bar]	[minut]	[ml/imp]	[mm]	[kg]	[euro]
HY.BC	Auto+M	3-5	10-8	160	0.31-0.52	190.5x92x135.5	2.5	253
HY.BX	Manual	3-5	10-8	160	0.31-0.52			236

Include kit complet compus din: valva de injectie, furtun de aspiratie si de refulare, sorb cu filtru



Cod	Debit [l/h]	Presiune [bar]	Impulsuri [minut]	Programare	Dozare	Volum dozaj [ml/imp]	Dimensiuni [mm]	Greutate [kg]	Pret lista
									[euro]
AT.AM.LF	0.4	20				0.06			583
	0.8	16		Analogic	NaOCl	0.11	190.5x92 x135.5	3	
	1.2	10	120			0.16			
	1.5	6				0.21			
AT.AM1	2.5	20		Analogic	NaOCl	0.21	190.5x92 x135.5	3	501
	3	18	120			0.28			
AT.AM2	3	12				0.31			391
	4	10		Analogic	NaOCl	0.42	190.5x92 x135.5	3	
	5	8	160			0.52			
	8	2				0.83			
AT.AM3	7	16				0.39			460
	10	10		Analogic	NaOCl	0.55	190.5x92 x135.5	3	
	14	6	320			0.78			
	16	2				0.89			
AT.AM4	20	5				1.11			622
	22	4		Analogic	NaOCl	1.22	190.5x92 x135.5	3	
	35	2	300			1.94			
	50	1				2.78			

Include kit complet compus din: valva de injectie, furtun de aspiratie si de refulare, sorb cu filtru



Cod	Debit	Presiune	Impulsuri	Denumire	Dozare	Volum dozaj	Dimensiuni	Greutate	Pret lista
									[euro]
AT.MT2	3-8	2-12	160	Digital	NaOCl	0.31-0.83	190.5x92 x135.5	3	518
AT.MT3	7-16	2-16	160	Digital	NaOCl	0.31-0.83	190.5x92 x135.5	3	593

Include kit complet compus din: valva de injectie, furtun de aspiratie si de refulare, sorb cu filtru .
Pompele Athena pot lucra in regim CONSTANT si AUTOMAT



Cod	Denumire	Material	Dimensiuni		Pret lista
					[euro]
AC.VI	Injector clor 1/2"-3/8"	PVC			25
AC.SL	Sonda de nivel	Cablu			32
FA4x6	Furtun aspiratie	PVC	4x6	1 metru	1.6
FI4x6	Furtun injectie	PE	4x6	1 metru	1.8
11406	Cap Pompa Athena	PVC		Pompe AT.AM	124
11277	Cap Pompa Hydra	PVC		Pompe Hydra	64
10414	Sorb cu filtru	PVC			28
PCB-Athena	Placa de baza			Pompe AT.AM	185
PCB-Hydra	Placa de baza			Pompe Hydra	130



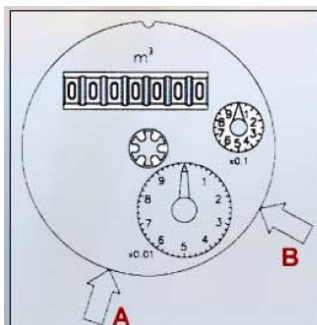
		Denumire	Rezervor pentru clor		
Cod	Volum [litri]	Dimensiuni [Dxh] cm	Capac [D] cm	Pret lista [euro]	
R56	56	38x64	10	80	
R100	100	50x68	20	133	
R133	133	48x84	10	165	
R150	150	50x92	20	216	
R200	200	57x95	20	230	
R800	800			680	



		Denumire	Debitmetru cu impuls Lancia				
Cod	Racord ["]	Debit maxim [m³/h]	Debit nominal [m³/h]	Impuls/ Litru	Presiune [bar]	Pret lista [euro]	
Deb-1/2-1	1/2"	3	1.5	1	10	60	
Deb-3/4-1	3/4"	5	2.5	1	10	72	
Deb-3/4-10	3/4"	5	2.5	10	10	72	
Deb-1-1	1"	7	3.5	1	10	123	
Deb-1-10	1"	7	3.5	10	10	123	
Deb-1 1/4-1	1 1/4"	10	5	1	10	155	
Deb-1 1/2	1 1/2"	20	10	1	10	260	
Deb-2	2"	30	15	1	10	406	
Em-LAN	Emitator Reed		Necesar ptr. Debitmetru Lancia			43	



		Denumire	Debitmetru cu impuls Woltmann cu flansa				
Cod	Racord ["]	Debit maxim [m³/h]	Debit nominal [m³/h]	Impuls/ Litru	Presiune [bar]	Pret lista [euro]	
Deb-50	2	30	15	100	16	Cereti pret	
Deb-65	2 1/2"	50	25	100	16	Cereti pret	
Deb-80	3"	80	40	100	16	Cereti pret	
Deb-100	4"	120	60	100	16	Cereti pret	
Deb-125	5"	200	100	100	16	Cereti pret	
Deb-150	6"	800	400	100	16	Cereti pret	
Deb-200	8"	1200	600	100	16	Cereti pret	
Em-WTL	Emitator Reed		Necesar ptr. Debitmetru Woltman			Cereti pret	



PULSE OUTPUTS

			Pulse Values	
REED	DN 50 - DN 125		DN 150 - DN 200	
	A 0,1 m³		A 1 m³	
	B 1 m³		B 10 m³	
Special versions available: K = 2,5 Lt.(50+125) - K=10 Lt. (50+125) - K=100 Lt.(150+200)				

REED TECHNICAL DATAS

Supply voltage	24 V 100 mA	Cable lenght	2 m.
Closure	< = 20 m/s	Protection class	IP 64
Protection resistance	100 Ohm	Temperature limits	-10 °C / +90 °C