



| Cod | Funcționare | Denumire | | Pompa Dozatoare Hydra | | Dimensiuni | Greutate | Pret lista |
|-------|-------------|----------|----------|-----------------------|-------------|----------------|----------|------------|
| | | Debit | Presiune | Impulsuri | Volum dozaj | | | |
| | | [l/h] | [bar] | [minut] | [ml/imp] | [mm] | [kg] | [euro] |
| HY.BC | Auto+M | 3-5 | 10-8 | 160 | 0.31-0.52 | 190.5x92x135.5 | 2.5 | 253 |
| HY.BX | Manual | 3-5 | 10-8 | 160 | 0.31-0.52 | | | 236 |

Include kit complet compus din: valva de injectie, furtun de aspiratie si de refulare, sorb cu filtru



| Cod | Debit | Presiune | Impulsuri | Programare | Dozare | Volum dozaj | Dimensiuni | Greutate | Pret lista |
|----------|-------|----------|-----------|------------|--------|-------------|----------------|----------|------------|
| | | | | | | | | | |
| AT.AM.LF | 0.4 | 20 | | | | 0.06 | | | |
| | 0.8 | 16 | | | | 0.11 | 190.5x92x135.5 | 3 | 583 |
| | 1.2 | 10 | 120 | Analogic | NaOCl | 0.16 | | | |
| | 1.5 | 6 | | | | 0.21 | | | |
| AT.AM1 | 2.5 | 20 | | | | 0.21 | 190.5x92x135.5 | 3 | 501 |
| | 3 | 18 | 120 | Analogic | NaOCl | 0.28 | | | |
| AT.AM2 | 3 | 12 | | | | 0.31 | | | |
| | 4 | 10 | | | | 0.42 | 190.5x92x135.5 | 3 | 391 |
| | 5 | 8 | 160 | Analogic | NaOCl | 0.52 | | | |
| | 8 | 2 | | | | 0.83 | | | |
| AT.AM3 | 7 | 16 | | | | 0.39 | | | |
| | 10 | 10 | | | | 0.55 | 190.5x92x135.5 | 3 | 460 |
| | 14 | 6 | 320 | Analogic | NaOCl | 0.78 | | | |
| | 16 | 2 | | | | 0.89 | | | |
| AT.AM4 | 20 | 5 | | | | 1.11 | | | |
| | 22 | 4 | | | | 1.22 | 190.5x92x135.5 | 3 | 622 |
| | 35 | 2 | 300 | Analogic | NaOCl | 1.94 | | | |
| | 50 | 1 | | | | 2.78 | | | |

Include kit complet compus din: valva de injectie, furtun de aspiratie si de refulare, sorb cu filtru



| Cod | Debit | Presiune | Impulsuri | Programare | Dozare | Volum dozaj | Dimensiuni | Greutate | Pret lista |
|--------|-------|----------|-----------|------------|--------|-------------|----------------|----------|------------|
| | | | | | | | | | |
| AT.MT2 | 3-8 | 2-12 | 160 | Digital | NaOCl | 0.31-0.83 | 190.5x92x135.5 | 3 | 518 |
| AT.MT3 | 7-16 | 2-16 | 160 | Digital | NaOCl | 0.31-0.83 | 190.5x92x135.5 | 3 | 593 |

Include kit complet compus din: valva de injectie, furtun de aspiratie si de refulare, sorb cu filtru .
Pompele Athena pot lucra in regim CONSTANT si AUTOMAT



| Cod | Denumire | Material | Dimensiuni | | Pret lista |
|------------|-------------------------|----------|------------|-------------|------------|
| | | | | | |
| AC.VI | Injector clor 1/2"-3/8" | PVC | | | 25 |
| AC.SL | Sonda de nivel | Cablu | | | 32 |
| FA4x6 | Furtun aspiratie | PVC | 4x6 | 1 metru | 1.6 |
| FI4x6 | Furtun injectie | PE | 4x6 | 1 metru | 1.8 |
| 11406 | Cap Pompa Athena | PVC | | Pompe AT.AM | 124 |
| 11277 | Cap Pompa Hydra | PVC | | Pompe Hydra | 64 |
| 10414 | Sorb cu filtru | PVC | | | 28 |
| PCB-Athena | Placa de baza | | | Pompe AT.AM | 185 |
| PCB-Hydra | Placa de baza | | | Pompe Hydra | 130 |



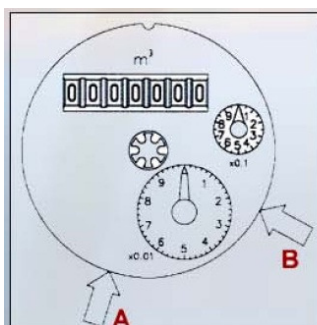
| | | Denumire | Rezervor pentru chimicale | | |
|------|---------------|---------------------|---------------------------|-------------------|--|
| Cod | Volum [litri] | Dimensiuni [Dxh] cm | Capac [D] cm | Pret lista [euro] | |
| R56 | 56 | 38x64 | 10 | 80 | |
| R100 | 100 | 50x68 | 20 | 133 | |
| R133 | 133 | 48x84 | 10 | 165 | |
| R150 | 150 | 50x92 | 20 | 175 | |
| R200 | 200 | 57x95 | 20 | 182 | |
| R800 | 800 | | | 680 | |



| | | Denumire | Debitmetru cu impuls Lancia | | | | |
|-------------|---------------|--------------------|--------------------------------|---------------|----------------|-------------------|--|
| Cod | Racord ["] | Debit maxim [m³/h] | Debit nominal [m³/h] | Impuls/ Litru | Presiune [bar] | Pret lista [euro] | |
| Deb-1/2-1 | 1/2" | 3 | 1.5 | 1 | 10 | 60 | |
| Deb-3/4-1 | 3/4" | 5 | 2.5 | 1 | 10 | 72 | |
| Deb-3/4-10 | 3/4" | 5 | 2.5 | 10 | 10 | 72 | |
| Deb-1-1 | 1" | 7 | 3.5 | 1 | 10 | 123 | |
| Deb-1-10 | 1" | 7 | 3.5 | 10 | 10 | 123 | |
| Deb-1 1/4-1 | 1 1/4" | 10 | 5 | 1 | 10 | 155 | |
| Deb-1 1/2 | 1 1/2" | 20 | 10 | 1 | 10 | 260 | |
| Deb-2 | 2" | 30 | 15 | 1 | 10 | 406 | |
| Em-LAN | Emitator Reed | | Necesar ptr. Debitmetru Lancia | | | 43 | |



| | | Denumire | Debitmetru cu impuls Woltmann cu flansa | | | | |
|---------|---------------|--------------------|---|---------------|----------------|-------------------|--|
| Cod | Racord ["] | Debit maxim [m³/h] | Debit nominal [m³/h] | Impuls/ Litru | Presiune [bar] | Pret lista [euro] | |
| Deb-50 | 2 | 30 | 15 | 100 | 16 | Cereti pret | |
| Deb-65 | 2 1/2" | 50 | 25 | 100 | 16 | Cereti pret | |
| Deb-80 | 3" | 80 | 40 | 100 | 16 | Cereti pret | |
| Deb-100 | 4" | 120 | 60 | 100 | 16 | Cereti pret | |
| Deb-125 | 5" | 200 | 100 | 100 | 16 | Cereti pret | |
| Deb-150 | 6" | 800 | 400 | 100 | 16 | Cereti pret | |
| Deb-200 | 8" | 1200 | 600 | 100 | 16 | Cereti pret | |
| Em-WTL | Emitator Reed | | Necesar ptr. Debitmetru Woltman | | | Cereti pret | |



PULSE OUTPUTS

| | | | Pulse Values | |
|---|----------------|--------|-----------------|-------|
| REED | DN 50 - DN 125 | | DN 150 - DN 200 | |
| | A | 0,1 m³ | A | 1 m³ |
| | B | 1 m³ | B | 10 m³ |
| Special versions available: K = 2,5 Lt.(50+125) - K=10 Lt. (50+125) - K=100 Lt.(150+200) | | | | |

REED TECHNICAL DATAS

| | | | |
|-----------------------|-------------|--------------------|-----------------|
| Supply voltage | 24 V 100 mA | Cable lenght | 2 m. |
| Closure | < = 20 m/s | Protection class | IP 64 |
| Protection resistance | 100 Ohm | Temperature limits | -10 °C / +90 °C |